



YARDBEAST



HEAVY-DUTY LOG SPLITTER

LZ-505



- HORIZONTAL/VERTICAL SPLITTING
- HEAVY DUTY DESIGN
- ROAD TOWABLE



HEAVY-DUTY WOOD SPLITTING

Elevate your wood splitting game with the Yardbeast LZ-505, where heavy-duty meets high performance. With its robust 3/8"-thick all-around beam, enclosed hydraulics, and the newest safety features, this log splitter is your ultimate tool for turning endless logs into premium firewood. Whether you're preparing for a cozy winter or scaling up your firewood business, the LZ-505 ensures efficiency, safety, and unmatched durability.

FEATURES AT A GLANCE:



32-TON SPLITTING FORCE



11-SEC SPLITTING CYCLE



2-STAGE HYDRAULIC PUMP



4.5 INCH BORE CYLINDER



24 INCH STROKE



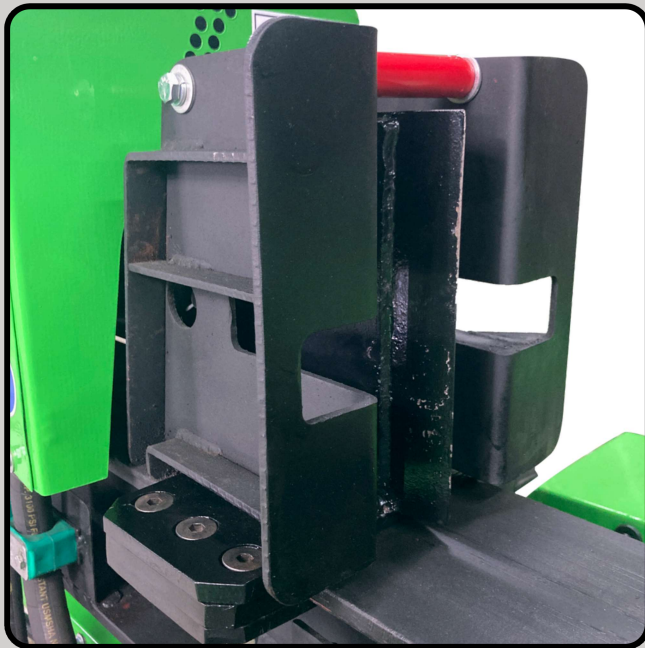
6-GALLON HYDRAULIC TANK



*62,000 LB
split force!*

SPLIT LOGS UP TO 2 FEET WIDE BY 2 FEET LONG LOGS!

With the Yardbeast LZ-505, even the heaviest logs slide effortlessly into the chamber, thanks to its robust construction featuring 1" thick square tubing and 3/16" steel gauge railings. This log splitter's sturdy build means you can focus solely on turning logs into firewood, without ever worrying about the splitter itself.



The splitting wedge is precision-machined and heat-treated, providing a razor-sharp edge for long-lasting, efficient cuts that reduce power consumption and protect the structural integrity of the machine. Additionally, it's designed with enhanced visual safety cues to ensure user safety as the wedge retracts.



The boot of the beam is fabricated from 1" thick steel, allowing the splitting wedge to demolish even the toughest knots! The design includes removable trays for versatility, allowing you to attach various accessories like extended log handling trays for your needs.

LZ-505

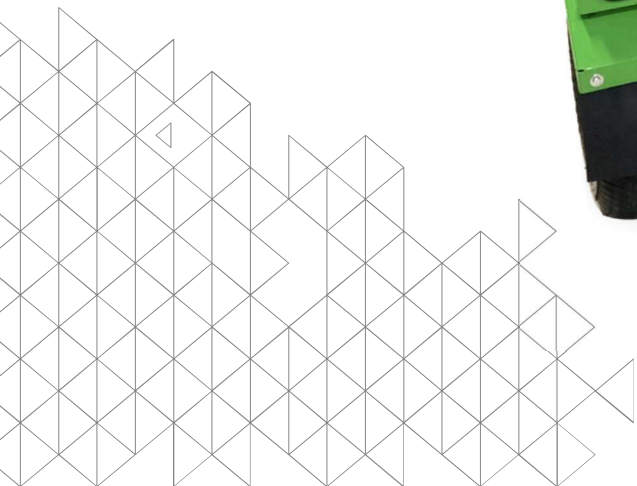
HEAVY LOGS? LET'S GO VERTICAL!

When the logs are too heavy to lift into the tray, easily convert the splitter from the horizontal to the vertical position. The vertical position gives you still immediate reach to the hydraulic valve lever and emergency safety button. The valve comes with auto-detent, saving time when the cylinder retracts.





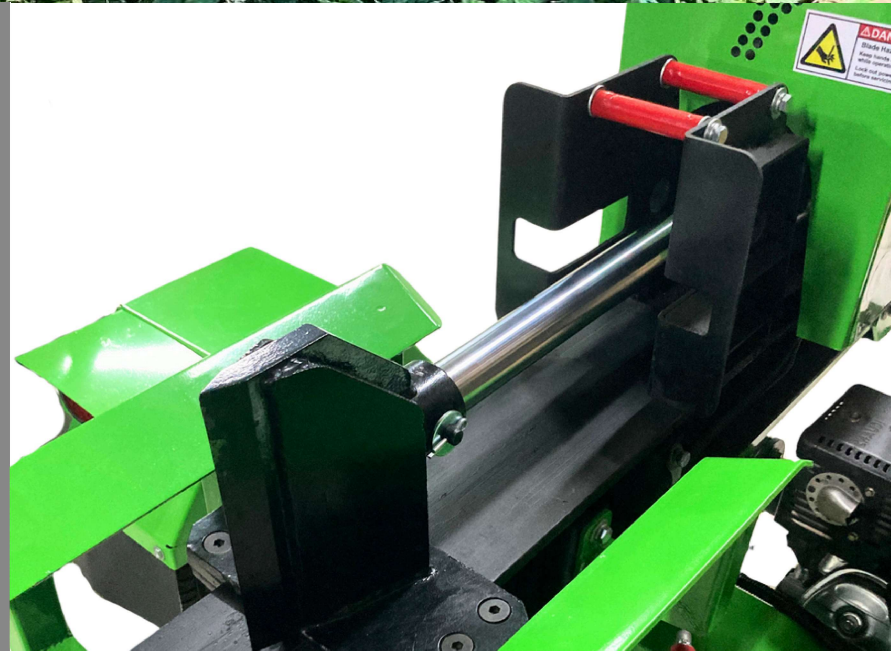
The Yardbeast LZ-505 is designed with ergonomics in mind to make log splitting more efficient and comfortable. The splitting cradle is positioned at a user-friendly height of 32 inches off the ground, allowing for accurate placement and control when handling heavy logs. The controls are conveniently located on both sides of the tray, accessible whether you're using the splitter in its horizontal or vertical mode.



LZ-505

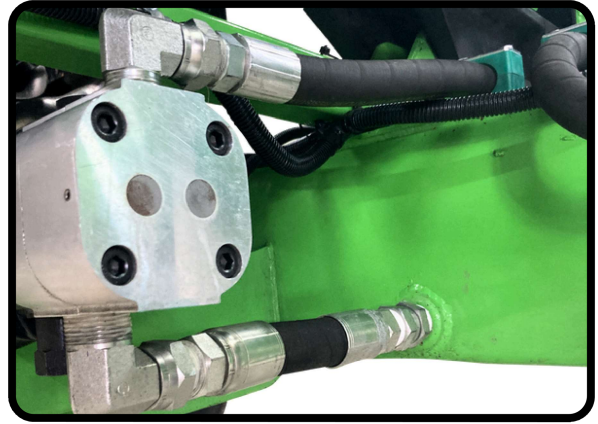


The splitter wedge is machined with a razor sharp edge and welded with split flaps to allow quick wood detachment. The splitter wedge can be switched to a 4-way splitter if needed. All splitting wedges are heat treated for improved abrasion resistance.





The LZ-505 comes with road-speed-capable wide tires, giving you amazing offroad capability and excellent stability when traveling on the road.



The dual-stage pump delivers up to 22 GPM. The first stage fills the hydraulic cylinder quickly, and the second stage kicks in at the log splitting moment to achieve peak split force.



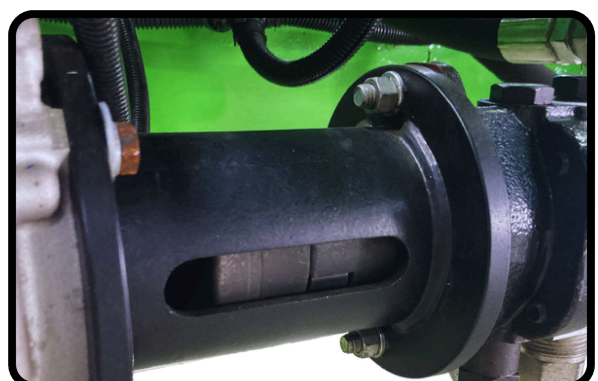
We redefined the log splitter design by giving it a more aesthetic look, organizing and enclosing all hydraulic hoses and components with its distinctive shroud, reducing visual clutter, and allowing you to focus better on the log splitting part.



Deluxe accessories on the splitter are standard, like a hydraulic oil cap with strainer, and internal magnetic debris plug. All trailer light connections are enclosed in DOT approved loom cable.



The LZ-505 has a return oil filter capable of filtering up to 25GPM down to 10 micron to remove all types of impurities coming down on the return line.



The hydraulic pump is connected to a heavy-duty flexible coupler that makes the engine and pump run smoothly.

THE ENGINE

KOHLER[®]
IN POWER. SINCE 1920.



14HP | 3,600 RPM | 429CC

- Heavy Duty Air Cleaner
- Oil Sentry TM Safety feature automatically and efficiently shuts down the engine in low oil conditions.
- Large capacity fuel tank (1.9 US gal)
- Cast-iron cylinder bore and splash lubrication system.

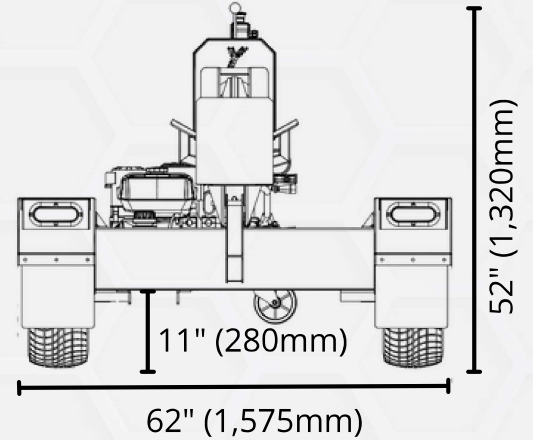
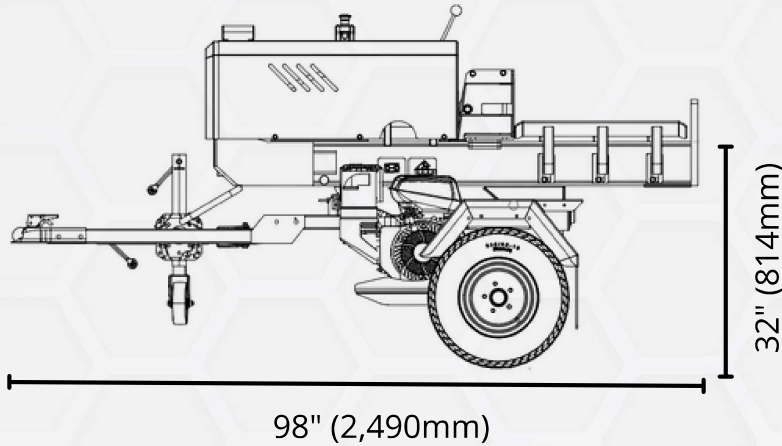
3 YEARS WARRANTY

SPECIFICATIONS

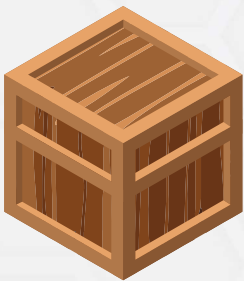
LZ-505

- Ram Force: 32-ton
- Operating Position: Horizontal, Vertical
- Cycle Time: 11 s.
- Max Log Length: 24 in.
- Max Log Weight: 200 lb.
- Log Catchers: Yes
- Auto-Return Valve: Yes
- Wedge Type: Single
- Wedge Material: Hardened Steel
- Cylinder Diameter: 4.5 in.
- Cylinder Rod Size: 1.75 in.
- Hydraulic Pump: 2-Stage
- Hydraulic Flow Rate: 22 gal/min
- Hydraulic Oil Tank Capacity: 6.2 gal.
- Hydraulic Oil Type: ISO 46 Hydraulic Fluid
- Hydraulic Filter: External
- Hydraulic Tank: Cap with Strainer/Magnetic
- Hydraulic Oil Included: No
- Safety Features: Enclosed Hydraulics/ Emergency Push Button standard.
- Power Type: Gasoline
- Start Type: Recoil
- Engine Brand Kohler Command Pro[®]
- Engine Size: 429cc
- Engine Type: 4-stroke
- Gasoline Capacity: 1.9 gal.
- Engine Oil Type: SAE 10W-30
- Engine Oil Capacity: 1.1-lt
- Engine Oil Included: Yes
- Low Oil Shut-Off : Yes
- Wheels: Highway/Offroad
- Wheel Type: 205/65-10 (20.8" when inflated)
- Trailer Front Jack: 1,000-lb w/dolly
- Rear Trailer Jack: 5,000-lb foot stand
- Trailer Light: Yes
- Trailer Chain: Yes
- Hitch Type 2 in. Ball Hitch
- Fenders: Yes
- Max Tow Speed: 45 mph
- EPA Certified Yes

CHIPPER DIMENSIONS



SHIPPING DIMENSIONS



The splitter is shipped in two (2) metal cages. The user manual is lodged inside the black plastic manual canister above the belt guard.

CRATE 1 BEAM

Length: 75"
Width: 21"
Height: 37"

Weight: 210lb

CRATE 2 BASE

Length: 65"
Width: 37"
Height: 26"

Weight: 250lb



All of our products are shipped from our warehouse in Miami, Florida by LTL (Less-than-Truckload) freight across continental United States.